

The Geological Society

-serving science, profession & society

Corporate Supporters:



Convenors:

Matt Jameson
Glencore

Gwilym Lynn
Shell

Leigh Truelove
Schlumberger

Ingrid Demaerschalk
Tullow

Alun Griffiths
Rockhopper

Catherine Tonge
Shell

David Hulme
Equinor

Tom Marsh
Rock Flow Dynamics

James Aguas
Halliburton

Sponsored by:

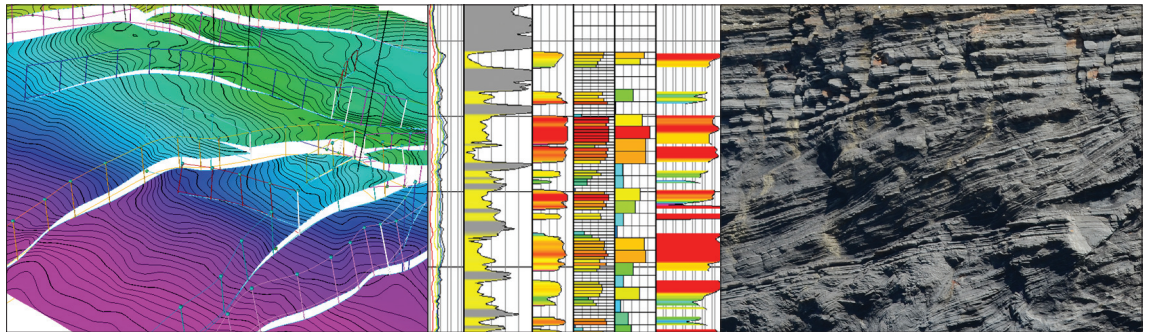


Registration Now Open

Capturing Geoscience in Geomodels

26-27 June 2019

Robert Gordon University, Aberdeen



Over recent years the construction of 3D static and dynamic reservoir models has become increasingly complex. With the availability of extensive tools and technology it is important not to forget the objective of the modelling process.

As we develop our hydrocarbon fields it is essential that 3D Static Models be built with fit-for-purpose geological models, honouring the geological, geophysical and petrophysical data that they are created from.

This two-day conference will explore how geoscience information should be used to best effect, and how to identify when geoscience data may no longer add value. Sessions will include the following themes:

- Data integration: seismic, well log, sedimentological, core dynamic data and beyond
- Capturing conceptual geology in reservoir modelling for different settings and depositional environments
- Scale: geology vs model vs data
- Uncertainty: dealing with geological uncertainty in modelling and understanding its benefits and limitations
- Embracing new modelling technology and approaches.

For further information please contact:

Sarah Woodcock, The Geological Society, Burlington House, Piccadilly, London W1J 0BG.

Tel: +44 (0)20 7434 9944 Web: <https://www.geolsoc.org.uk/PG-Geomodels>

At the forefront of petroleum geoscience

www.geolsoc.org.uk/petroleum

